

# **BAER**

B R A K E   S Y S T E M S

# **NEW PRODUCTS FOR 2019**



- CLASSIC SERIES BRAKE SYSTEMS
- REMASTER V2 MODULAR MASTER CYLINDER
- F-BODY | G-BODY SPINDLES
- JEEP JT | FRONT & REAR SYSTEMS
- BAER HIGH PERFORMANCE BRAKE FLUID
- COBRA IRS

QUALITY | SAFETY | PERFORMANCE | APPEARANCE

# - CLASSIC SERIES

The brake that started it all

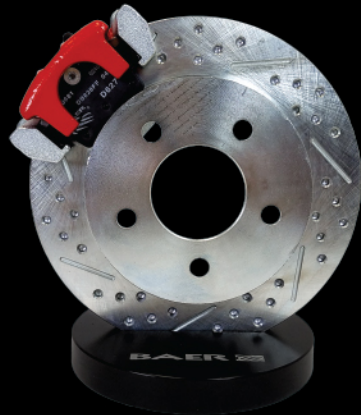


You have asked, and we have answered! Baer is bringing back the original Baer Claw Brake System that started it all, with the introduction of the Classic series. The Classic series is a direct bolt on for early GM, Ford and Mopar applications, features front and rear packages, red powder coated calipers, braided brake hoses, slotted and drilled rotors and best of all at affordable pricing! Want to modernize your early muscle car, still fit stock wheels, have access to replacement parts easily, not break the bank, and have the brand that is known for top quality products? Baer Classic is your answer!



FRONT - Retail \$695  
11"

- | Aluminum 2-piston caliper
- | Powder-coated Red
- | 11" slot, drill, zinc-plated rotors
- | Braided brake hoses



REAR - Retail \$495  
10.5"

- | Single-piston caliper
- | Powder-coated Red
- | 10.5" slot, drill, zinc-plated rotors
- | Integral park brake in the caliper

### Caliper Features

- | Front & Rear Packages Available
- | Powder Coated Red Calipers
- | Modern Brakes For Small Wheels
- | Stainless Braided Brake Hoses
- | Slot, Drill, Zinc Plated Rotors
- | Affordable Prices

COMING SOON

FRONT - 13"



# - F-BODY / G-BODY SPINDLES



Installing aftermarket brakes can be difficult on many early GM cars due to cast in caliper mounts. Baer's new G-body (stock height) spindle already comes pre-machined (and E-Coated) to make aftermarket brake installs easier on the 82-87 GM G-body platform.



# - COBRA IRS

SS4+



This system features the S4 4-piston caliper mounted to a 13", 2 piece slot, drill, zinc plated rotor. The S4 caliper has D.O.T compliant dust and weather seals and uses the popular DR1 or HB100 pad type. Rotors are pre-assembled with NAS high grade stainless hardware. Baer's unique backing plate not only acts as a caliper mount, but also houses a modern 1-piece park brake shoe assembly. Stainless braided hoses are also included. The 13" SS4+ fits most 17" or larger wheels.

### Caliper Features

- | 4 piston, lug mount, 2-piece billet aluminum construction
- | S4 calipers are proudly built in Phoenix, AZ from US sourced material. Made in the USA!
- | Utilizes 4 cross bolts for maximum stiffness
- | Features aluminum hard anodized pistons, and stainless abutments
- | Dual seals (dust/weather and pressure) to meet D.O.T specifications
- | Standard finish is Red, Black or Silver Powder Coat (custom colors available)
- | Front systems feature an 11" directionally vaned 2-piece rotor and fit most 15" wheels
- | Rear 13" features a drum in hat park brake
- | Rear 11" will match the front SS4+ and is our smallest rear offering (no park brake)

# - JEEP JT



## FRONT & REAR SYSTEMS

ALL SYSTEMS  
VEHICLE SPECIFIC | DIRECT BOLT ON  
INCLUDES CALIPERS WITH DOT  
COMPLIANT DUST & WEATHER SEALS

	FRONT	REAR
17" WHEEL	<div><b>PRO</b></div> <div></div> <div>Features the 6-piston, 6P caliper mounted to a 13.5", 1-piece slot, drill, zinc plated rotor. Includes the popular D0731 pad type and all mounting brackets and hardware (brake hoses not included). <b>PART #4401005</b></div>	<div><b>SS4</b></div> <div></div> <div>Features the S4 4-piston caliper mounted to a 13" x .810", 1-piece, slot, drill, zinc plated rotor. Includes the popular DR1-C or HB100 pad type and all mounting brackets and hardware (brake hoses not included). Caliper brackets incorporate Baer's unique Verislide design. <b>PART #4402007</b></div>
18" & LARGER WHEEL	<div><b>PRO+</b></div> <div></div> <div>Features the 6-piston, 6P caliper mounted to a 14", 2-piece slot, drill, zinc plated rotor. Includes the popular D0731 pad type and all mounting brackets and hardware (brake hoses not included). Rotors are pre-assembled with NAS high grade stainless hardware. <b>PART #4401006</b></div>	<div><b>PRO+</b></div> <div></div> <div>Features the 6P 6-piston caliper mounted to a 14.36", 2-piece slot, drill, zinc plated rotor. Includes the popular D0731 pad type and all mounting brackets and hardware (brake hoses not included). Rotors are pre-assembled with NAS high grade stainless hardware. Caliper brackets incorporate Baer's unique Verislide design. <b>PART #4402006</b></div>

## - BRAKE FLUID

Baer Street/Race DOT4

Available in a single 16.9oz bottle or in 3 or 10 bottle packs.

Baer Brake's, specially formulated, high temperature brake fluid has a minimum dry boiling point of 608°F making it able to withstand any condition from daily driving to the extreme conditions seen in high performance applications. Baer DOT4 brake fluid meets or exceeds SAE J1704 & FMVSS 116 specifications for DOT4 brake fluid and mixes safely with all SAE DOT3, 4 and 5.1 brake fluids.



## - REMASTER V2 MODULAR MASTER CYLINDER

**re-master**  
/rēmaster/

**verb**

to create a new master of, especially by altering or enhancing the quality of an older design.

"all other master cylinders pale in comparison to the Remaster"

### Features & Benefits

- | Compact billet body makes fitment easier while providing the high performance Baer is known for
- | Engineered for optimum balance between pressure and volume for great braking performance with reasonable brake-pedal effort
- | Fully machined body with bolt-on mount and machined screw in caps for easy access to fill (no tools needed)
- | Compact short design which allows this master to fit in a wide variety of applications
- | Billet machined screw on reservoirs
- | Ability to remote mount the reservoirs
- | Uses all the same mounts as the original remaster, including existing prop valves and hardlines
- | GM and Ford will use the same master (Firewall mount is designed to fit both)
- | Adjustable bolt-on proportioning valve available
- | Bolt on Firewall mount bracket. This master can be reused in other projects with a change of the bolt on bracket
- | Laser etched logos and part numbers for a finished look (on anodized version)
- | Designed, developed, machined and assembled in-house in Phoenix, AZ

Remaster V2 is a fully machined billet aluminum master cylinder unlike any other available today. Baer engineered the Remaster V2 with a compact design to make fitment easier in a variety of applications. Renowned for our performance braking systems, we applied the same engineering expertise to the Remaster V2. Our engineering team started with a blank sheet of paper to develop a master cylinder that solves fitment and performance issues faced by builders of street-driven performance cars and race vehicles alike.



Baer Brakes prides itself on building world class brake systems for a wide variety of application and uses. At the forefront of the Pro-touring movement, Baer is recognized as the industry leader for premium brake components for early domestic muscle cars and hot rods.

[www.BAER.com](http://www.BAER.com)  
602.233.1411